

Drafting Services

Accurate engineering drawings are critical in design phase of many industries; they are the instructions used in the production of the actual parts, machines and structures.

We have a highly experienced, skilled and specialized mechanical drafting and design team headed by an Engineering Manager with over 15 years' experience in Australian drawing offices

We can provide cost-effective drawings at all levels – conceptual, assembly and detail with packaged DXF & NC files to reduce lead-time.

With our Engineering capabilities, design and detailing team, we provide quality drawings with Australian standards

Our Drafting Service Includes

- Quote, estimate or proposal models
- Fabrication shop floor drawings
- Generating tender models
- Erection plans
- Structural analysis & Report
- General Arrangement drawings
- Layout drawings.
- Bolt list
- DXF Files for plate work & members
- NC Files for cutting & drilling
- Base plate & anchor plate details
- Material lists/Take-offs & Tonnage estimations
- Anchor bolt drawings
- Connection details

Other Engineering Service Includes

Engineering & Designing

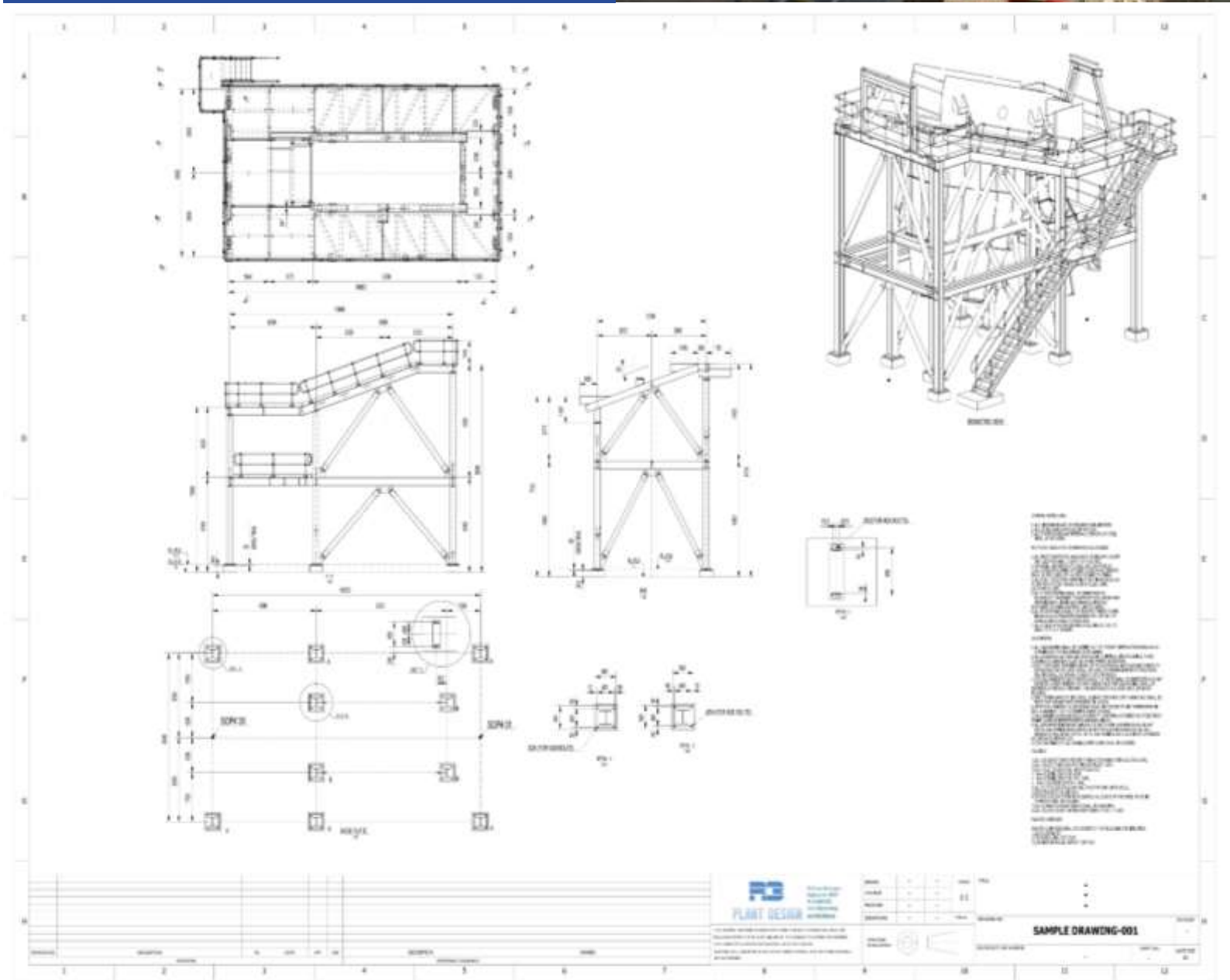
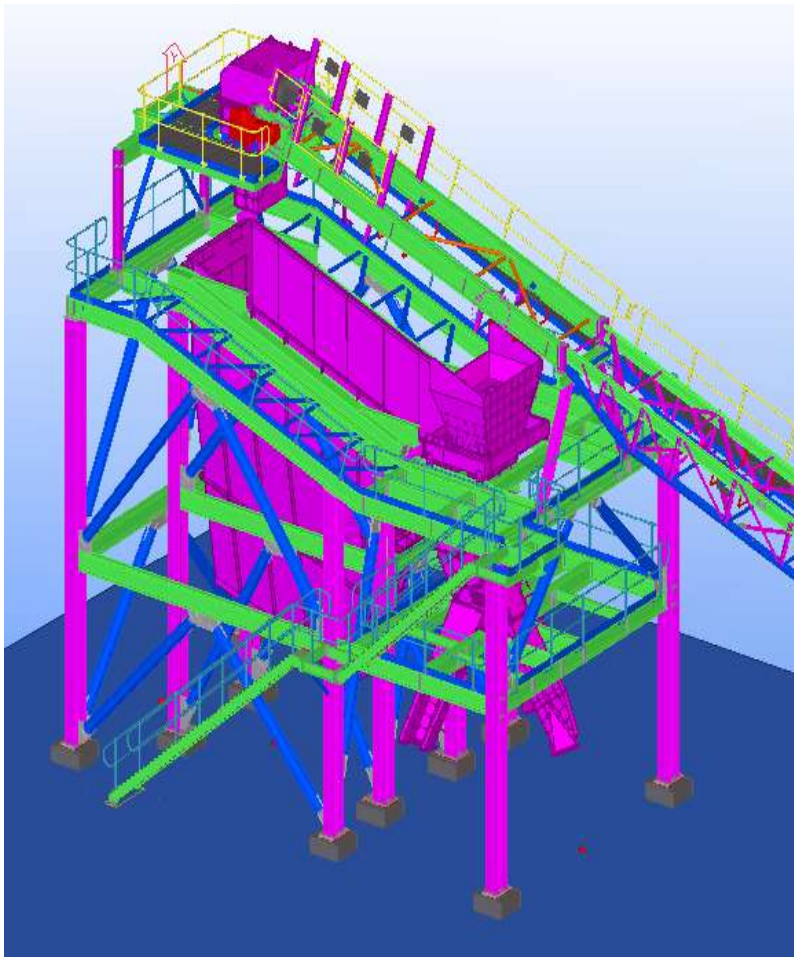
- Structures, Supports, Towers, Walkways & Stairs
- Structural design & reports
- Belt Conveyors, feeders & Stackers
- Screw Conveyors
- Chain Conveyors
- Bucket Elevators.
- Slide Gates & Diverter chutes.
- Pipe racks and supports

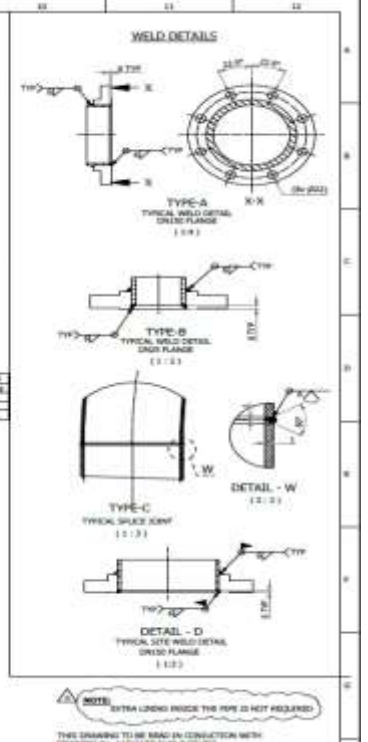
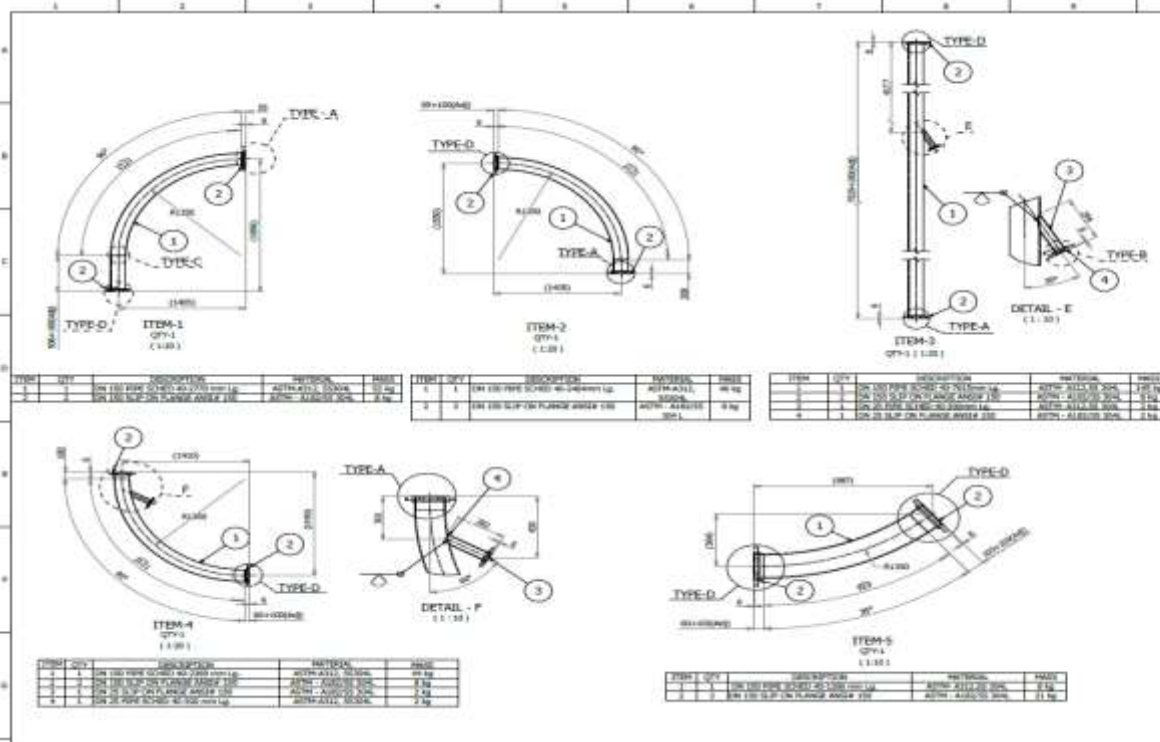
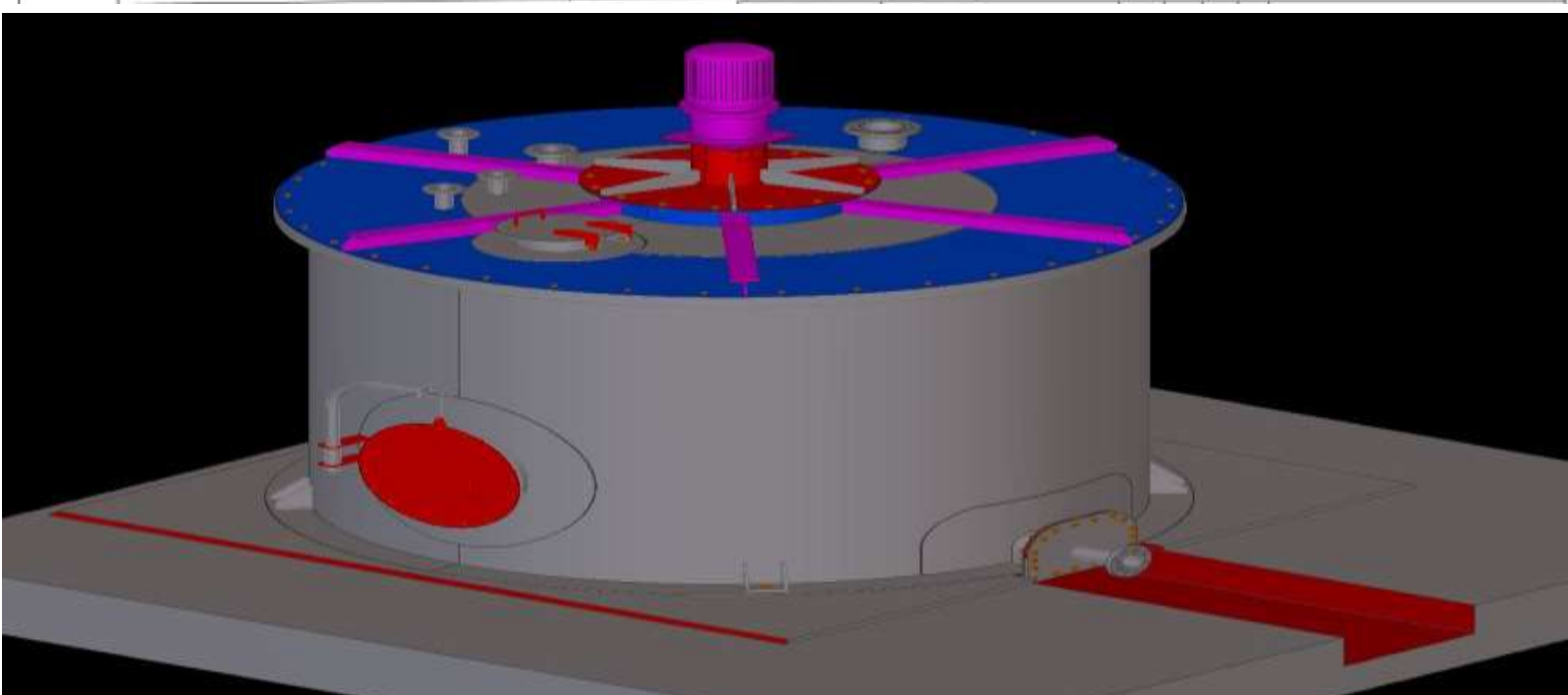
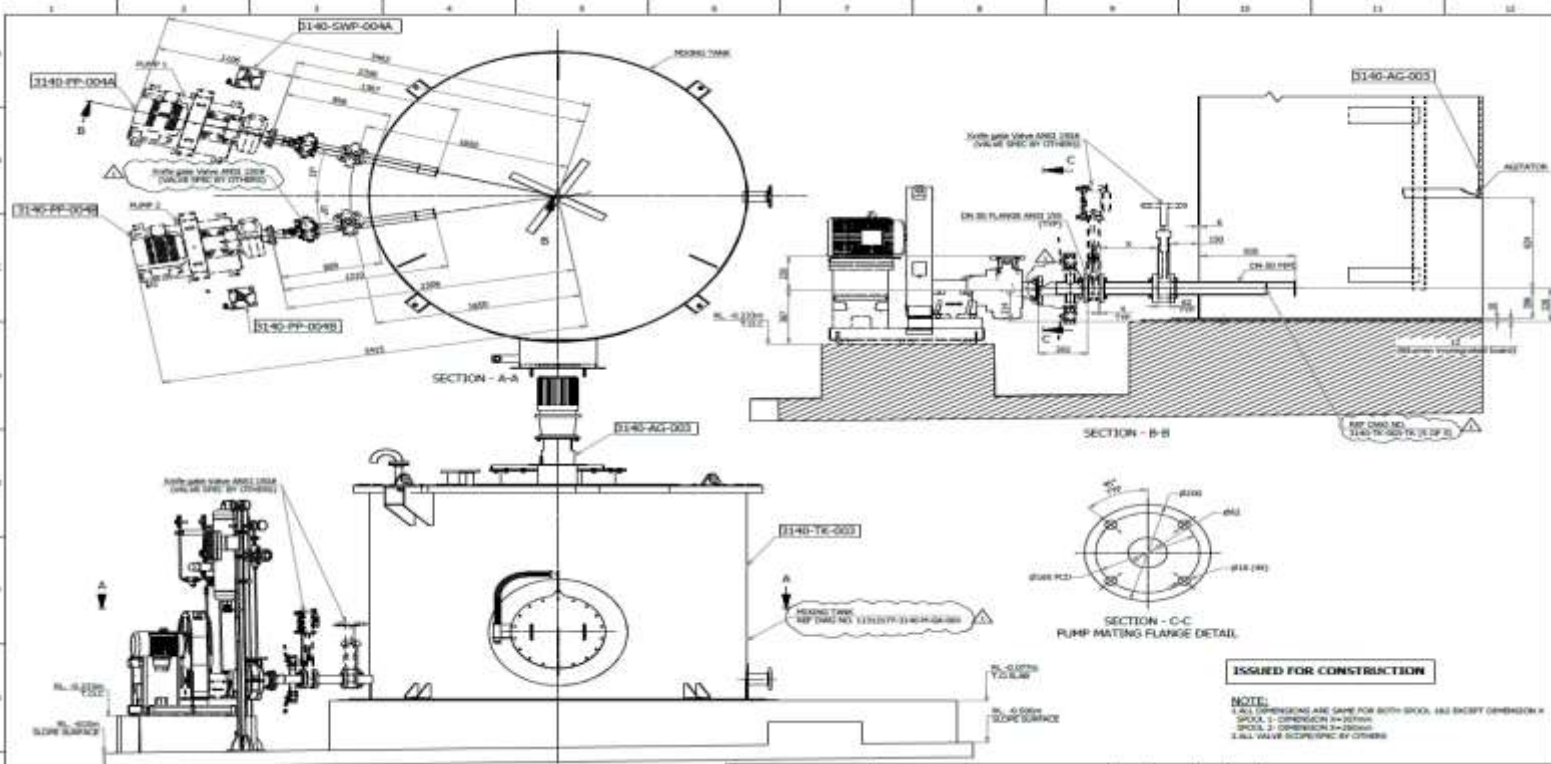
Cost Savings

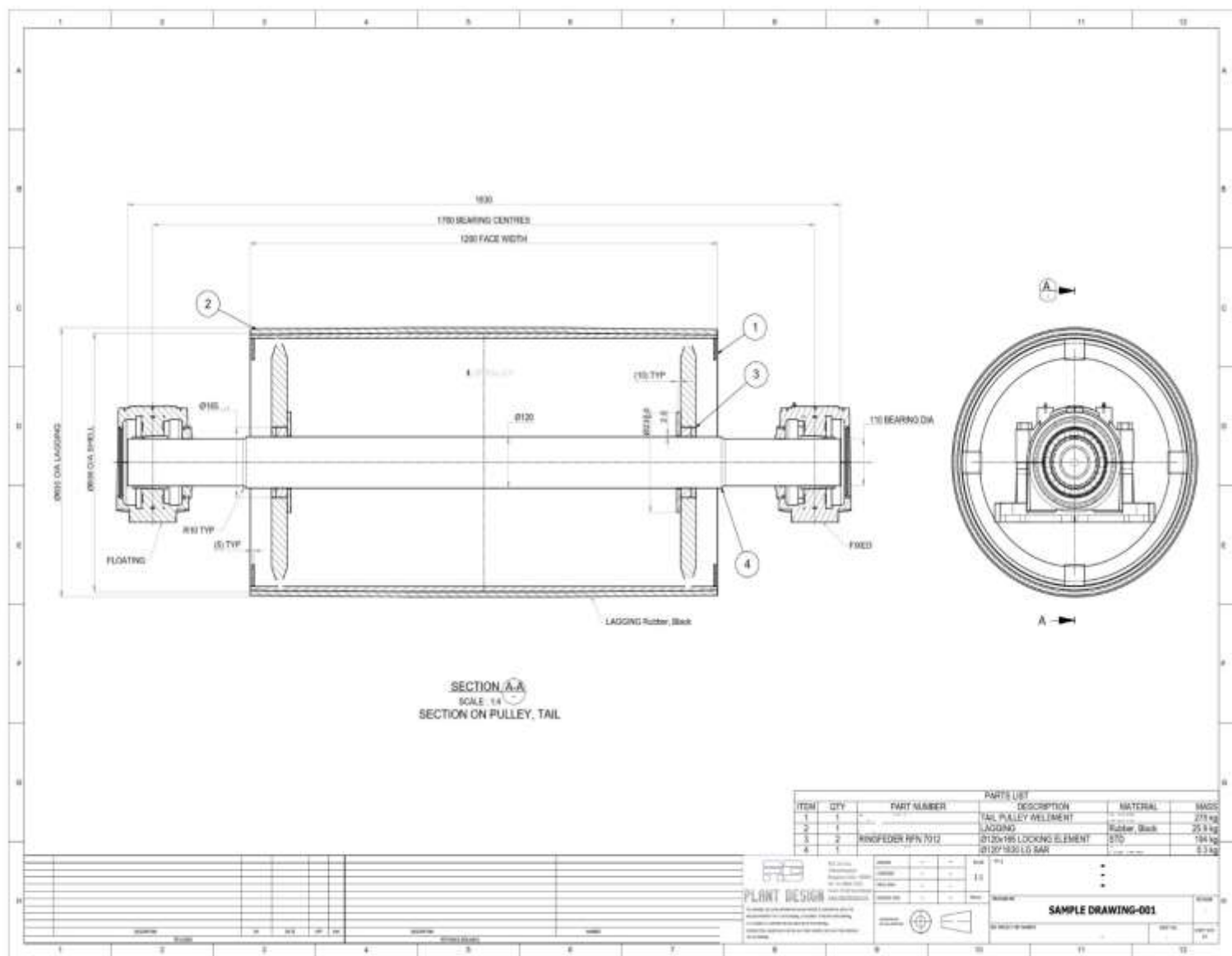
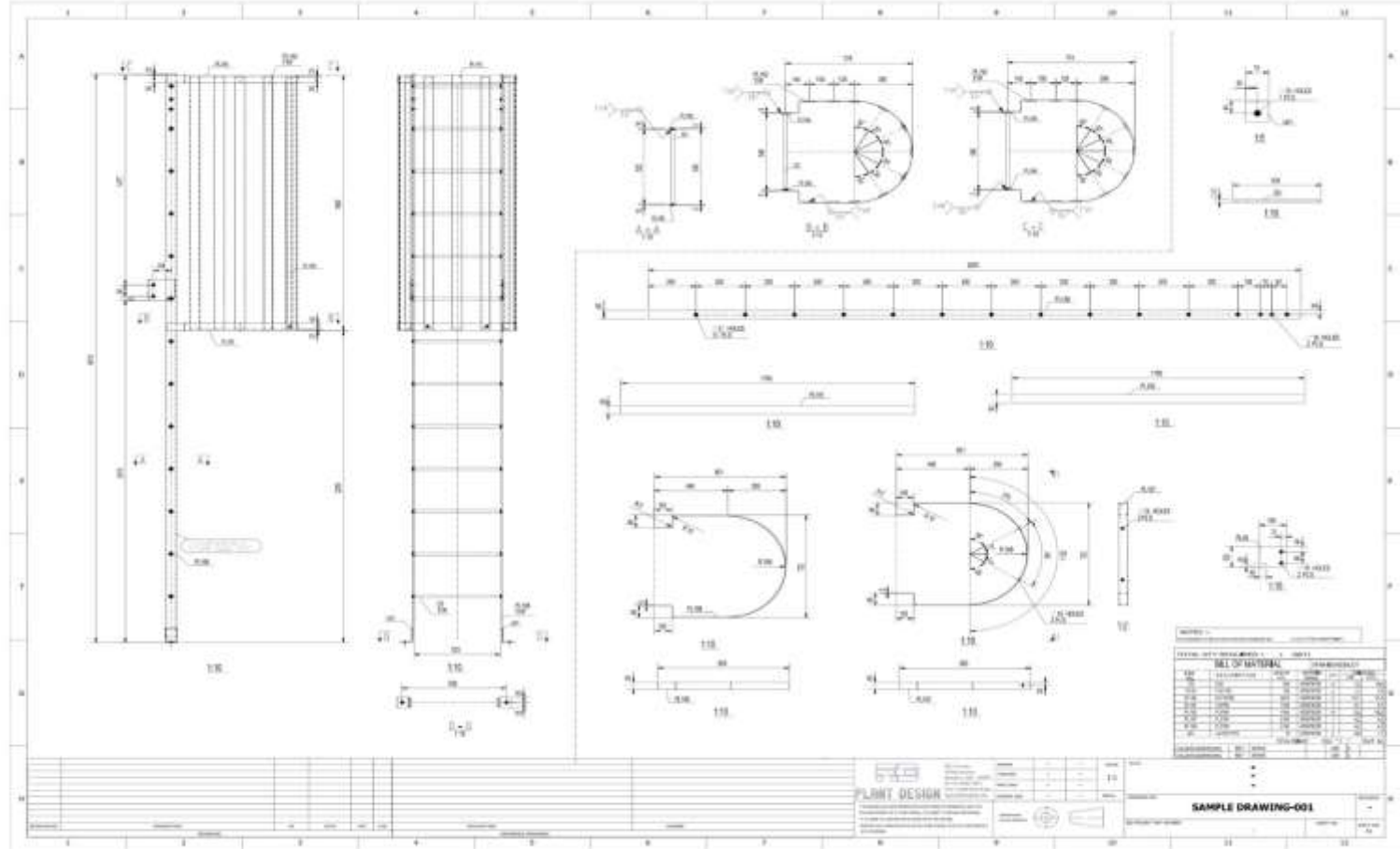
We provide significant cost savings to projects by utilizing local Engineering's, modelers and detailers, which help our clients win competitive projects.

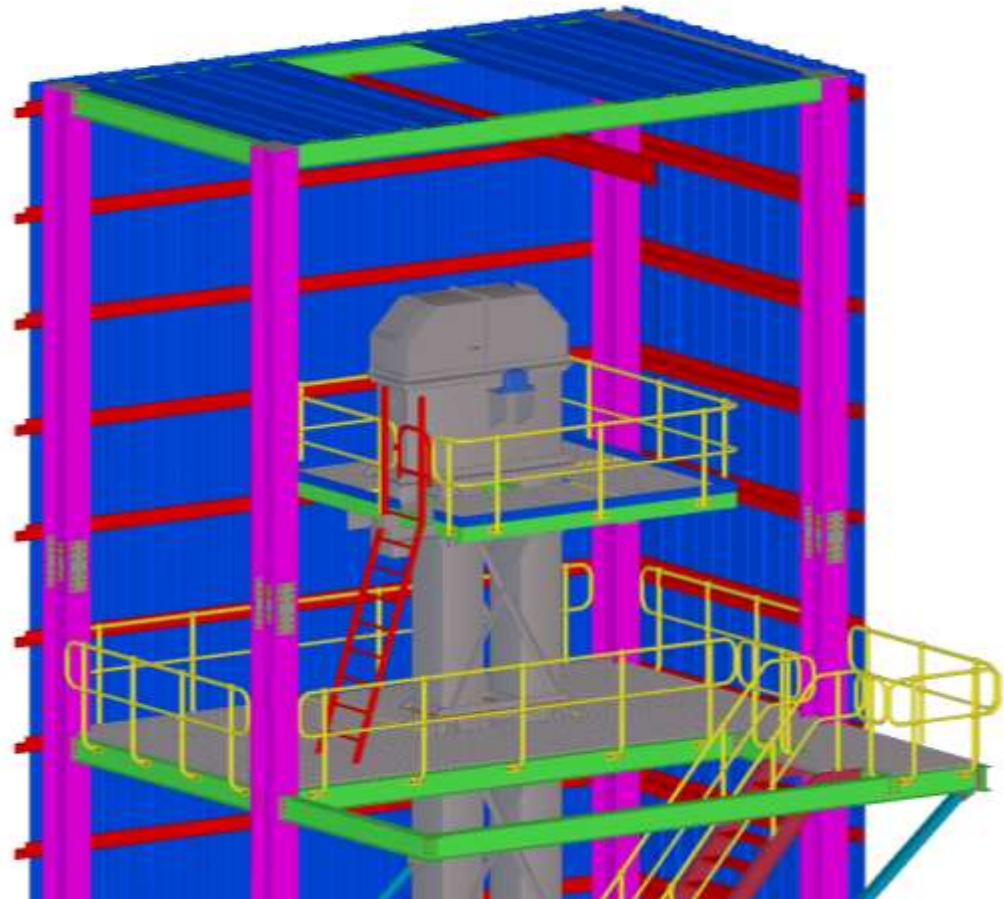
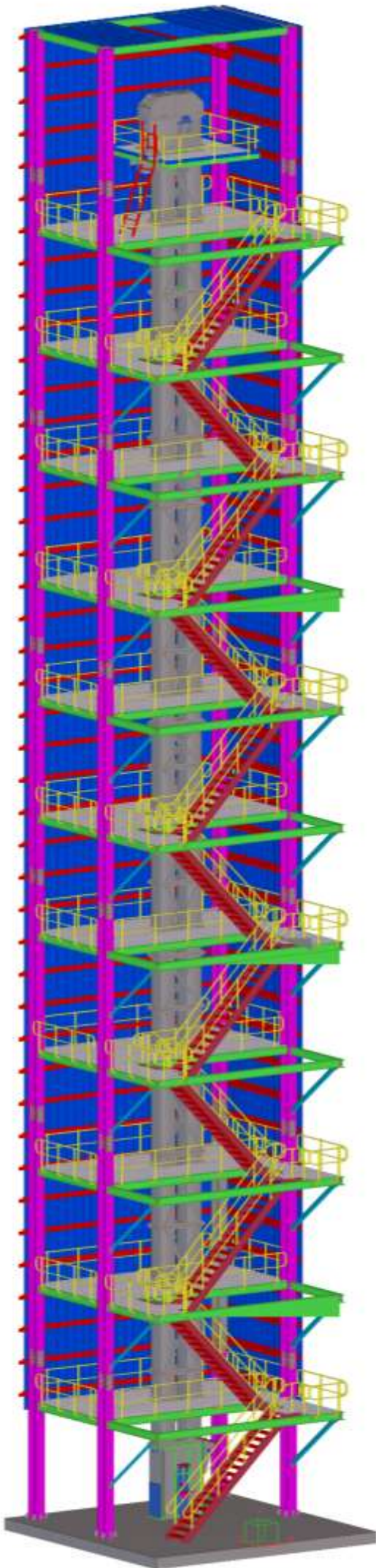
Time Saving

Overall design time is reduced when more labour is involved on your project – we provide both shift work and also time zone work, getting very close to 24 hour resources. This greatly reduces project lead-time and moreover, if any urgent design changes were made in Australia, these would be addressed by the following morning due to time zone work and shift work.









Bucket Elevator Towers

Bucket elevator support towers are custom designed to suit client specifications.

Platforms built as separate units can be placed between tower sections, this design allows the installer to build the platform separately and then site place it between tower sections.

Design is available to pre-weld stair modules as single assemblies to greatly reduce erection time.

Structural Detailing

We work with your design inputs to generate models. We have experience working on Australian, AISC and IS Standards as required by our clients / overseas structural engineers.

Australian Codes and Standards

AS/NZS 1170.0-2002 Structural design actions
AS/NZS 1170.2-2002 Structural design actions
AS 1170.4-2007 Structural design actions –
AS 4100-1998 Steel structures

General Codes

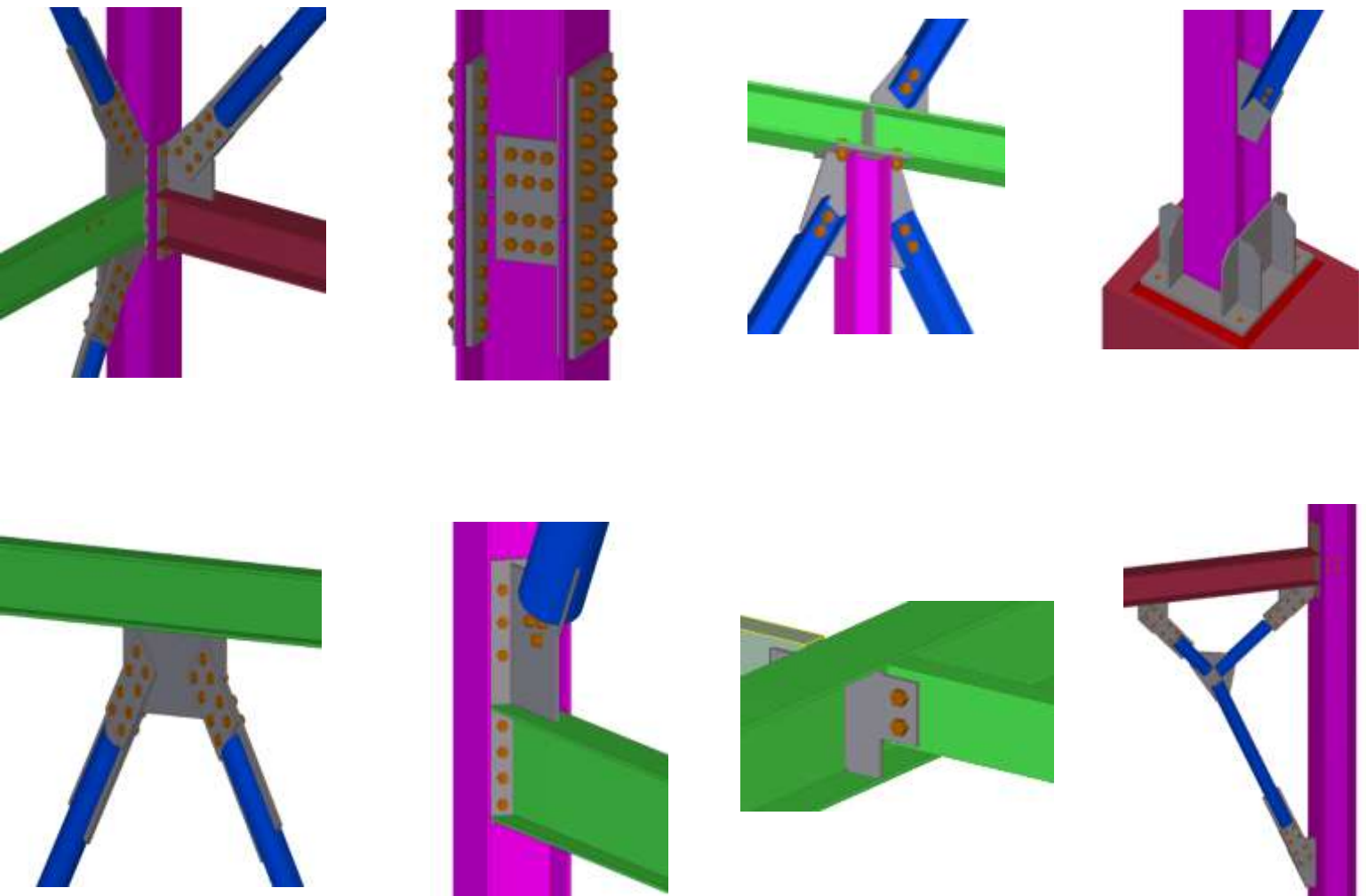
AS1657	Walkways maintenance and access platforms
AS4024-2015	Safety of Machinery
AS1755-2000	Conveyor Safety Requirements
AS4100	Steel Structures
AS1359	Rotating Electrical Machines,
AS1470	Health & Safety at Work,
AS 1554.1	Structural Steel Welding, Australian standard
AS3990	Mechanical Equipment – Steelwork,

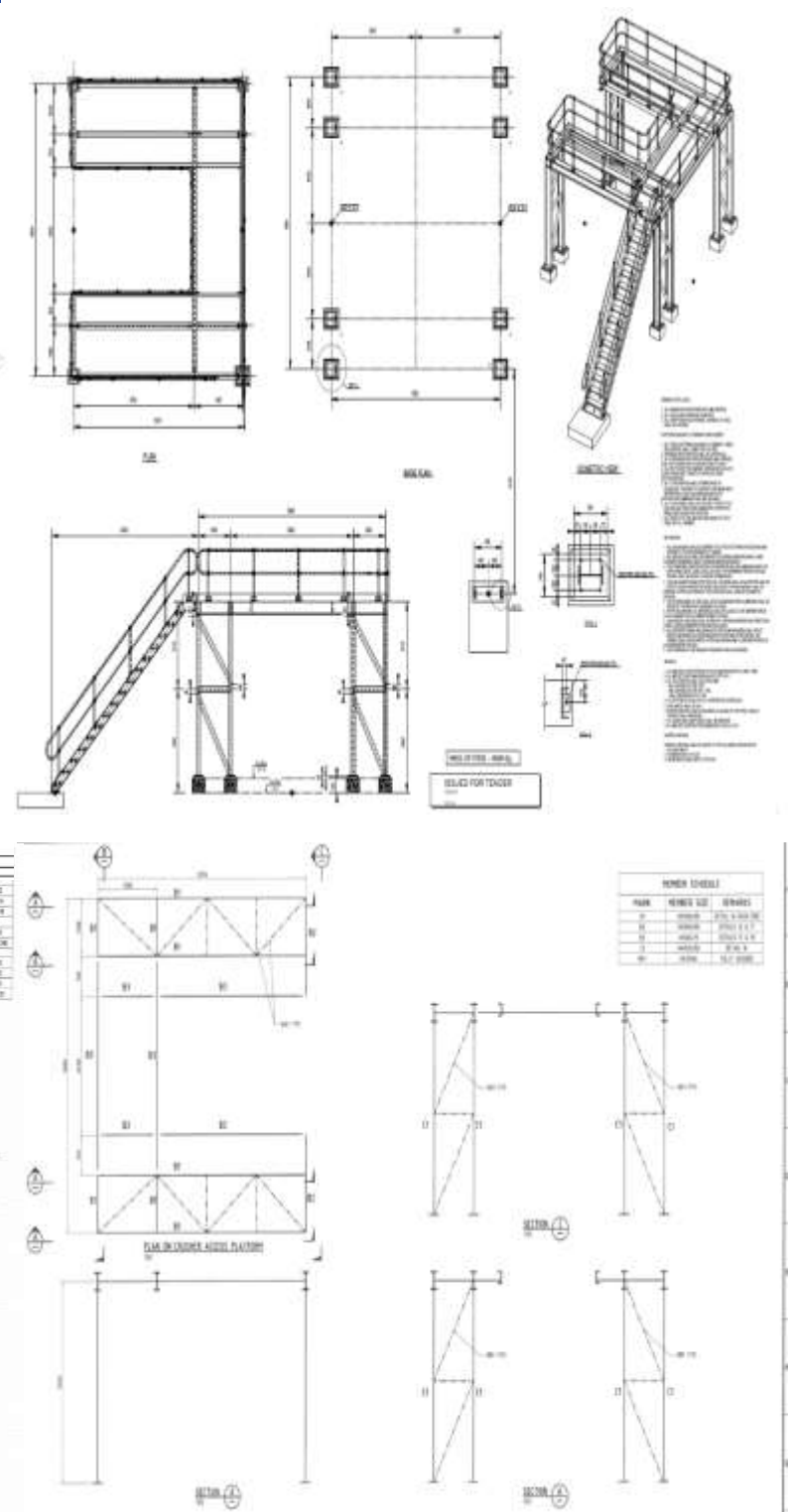
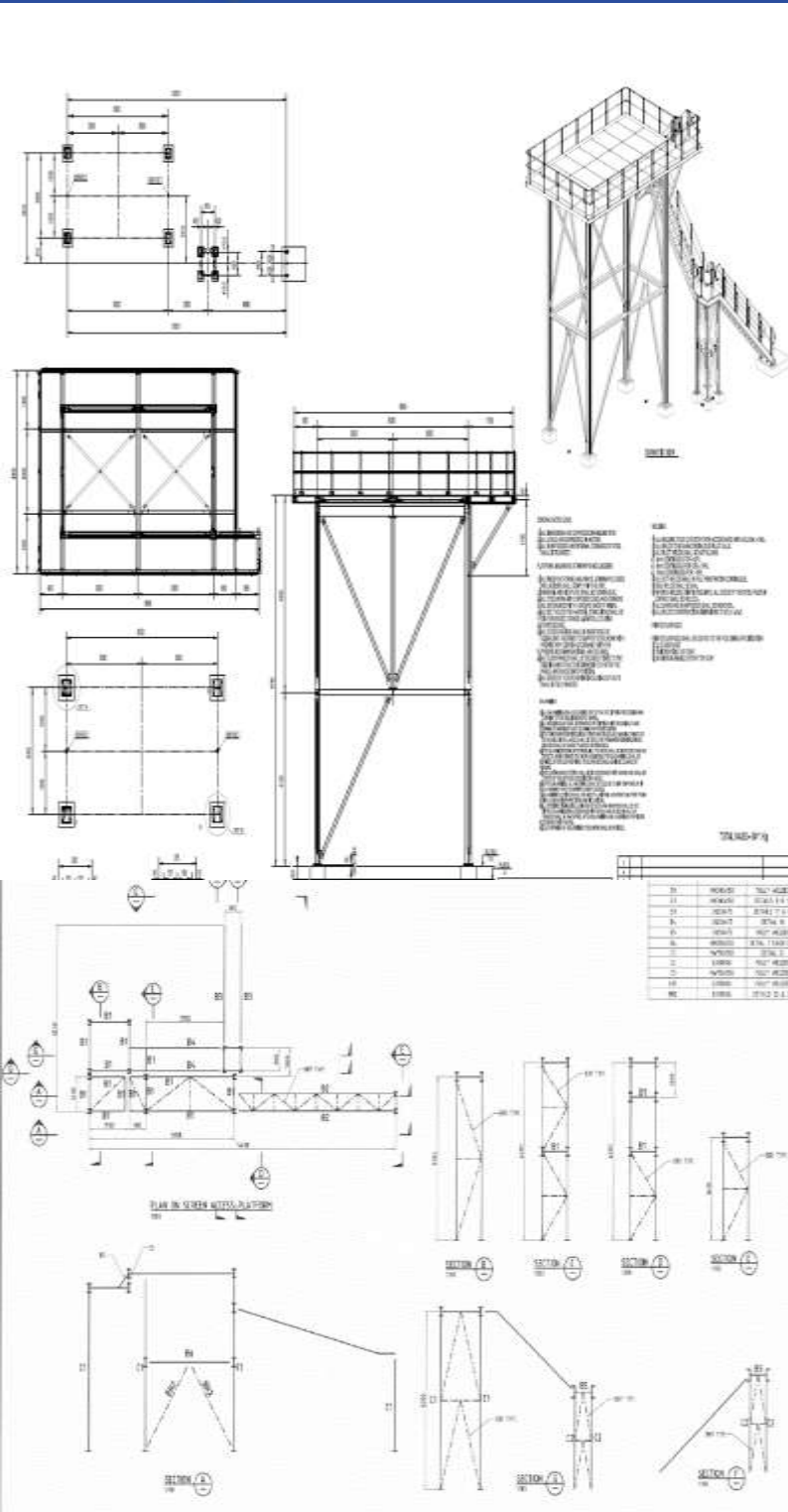
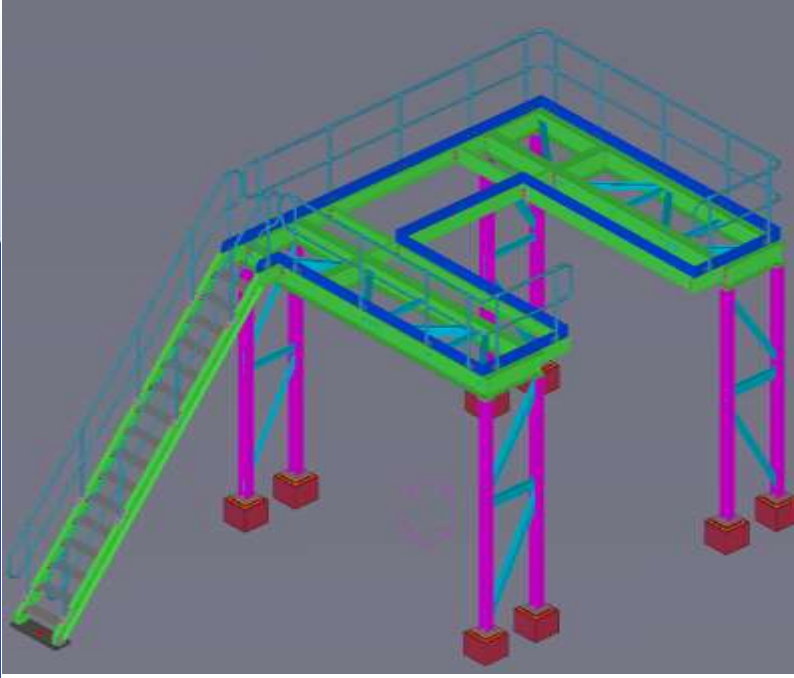
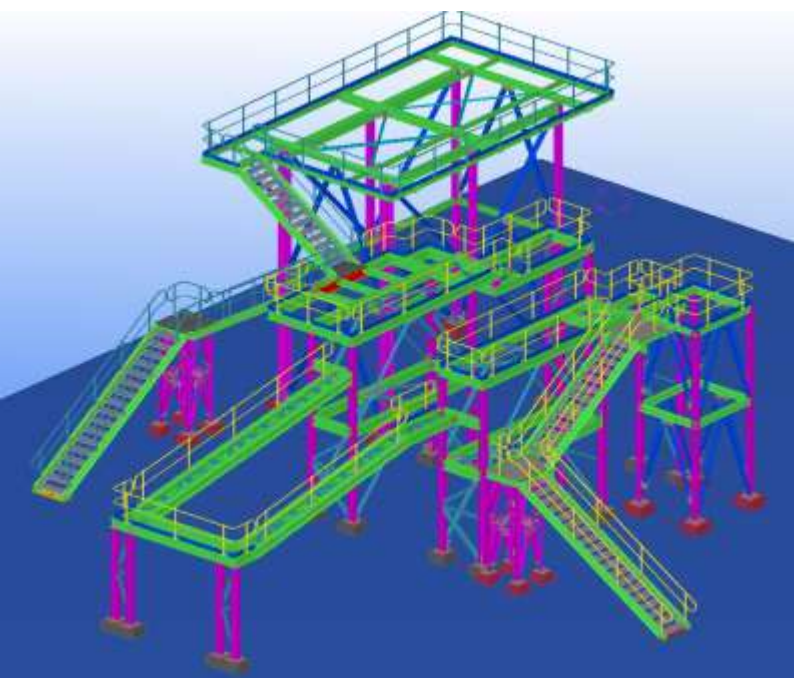
American Codes:

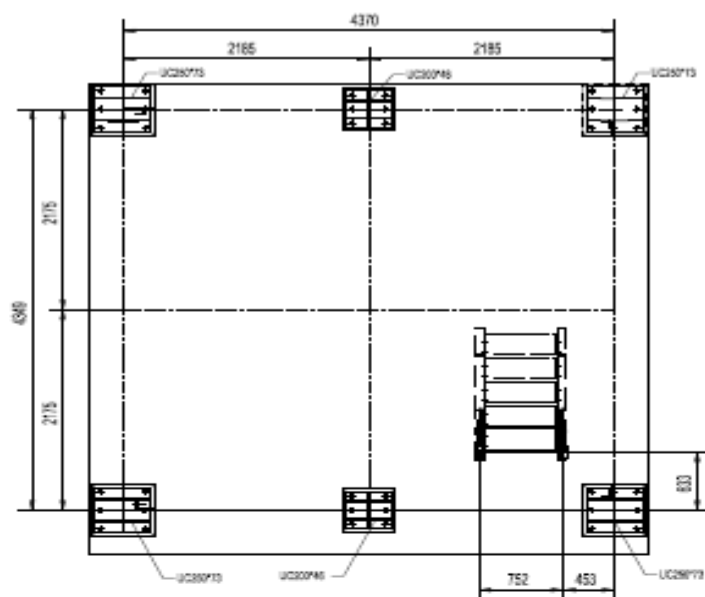
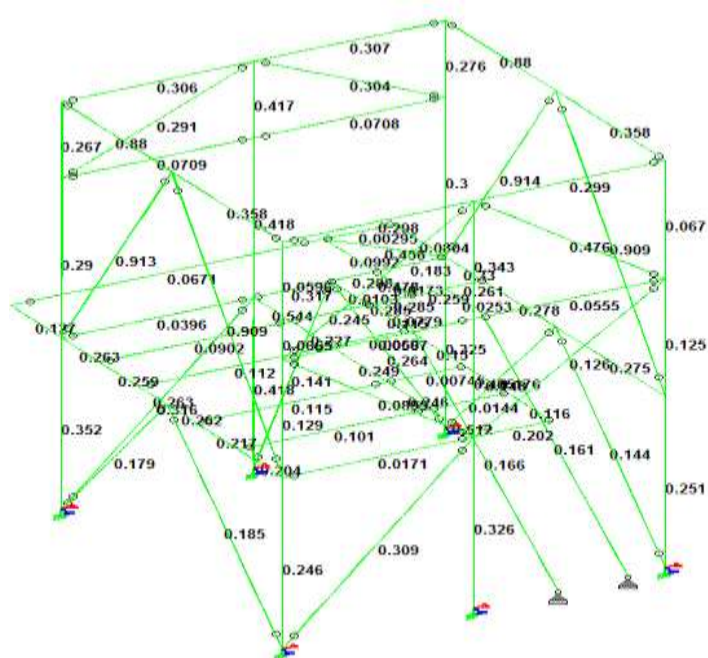
ASCE-7-10: Minimum Design Loads for Buildings & other structures.
ASCE-7-10: Wind Loads
ASCE-7-10: Seismic Loads
STEEL DESIGN: AISC Steel Construction Manual
14th Edition for Design of steel Structures.
AWS D 1.1 & 1.3: Structural Steel Welding, American standard

European Codes & Standards:

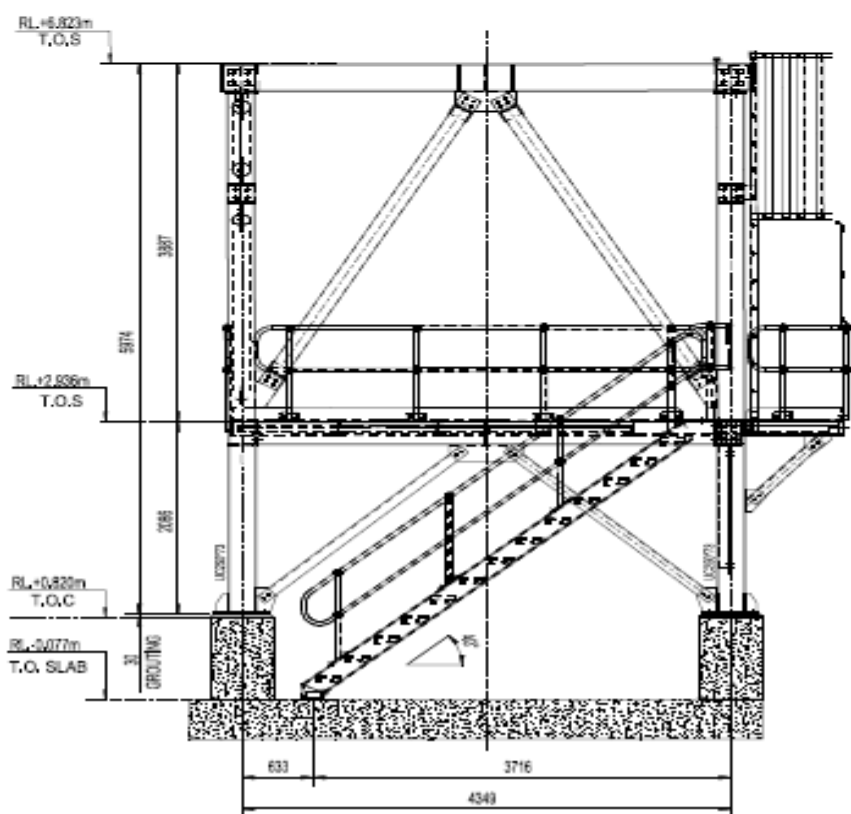
EN 1990 Euro code: - Basis of structural design
EN 1991 Euro code 1:- Actions on structures
EN 1993 Euro code 3:- Design of steel Structures
EN 1998 Euro code 8:- Design of structures for earthquake resistance.





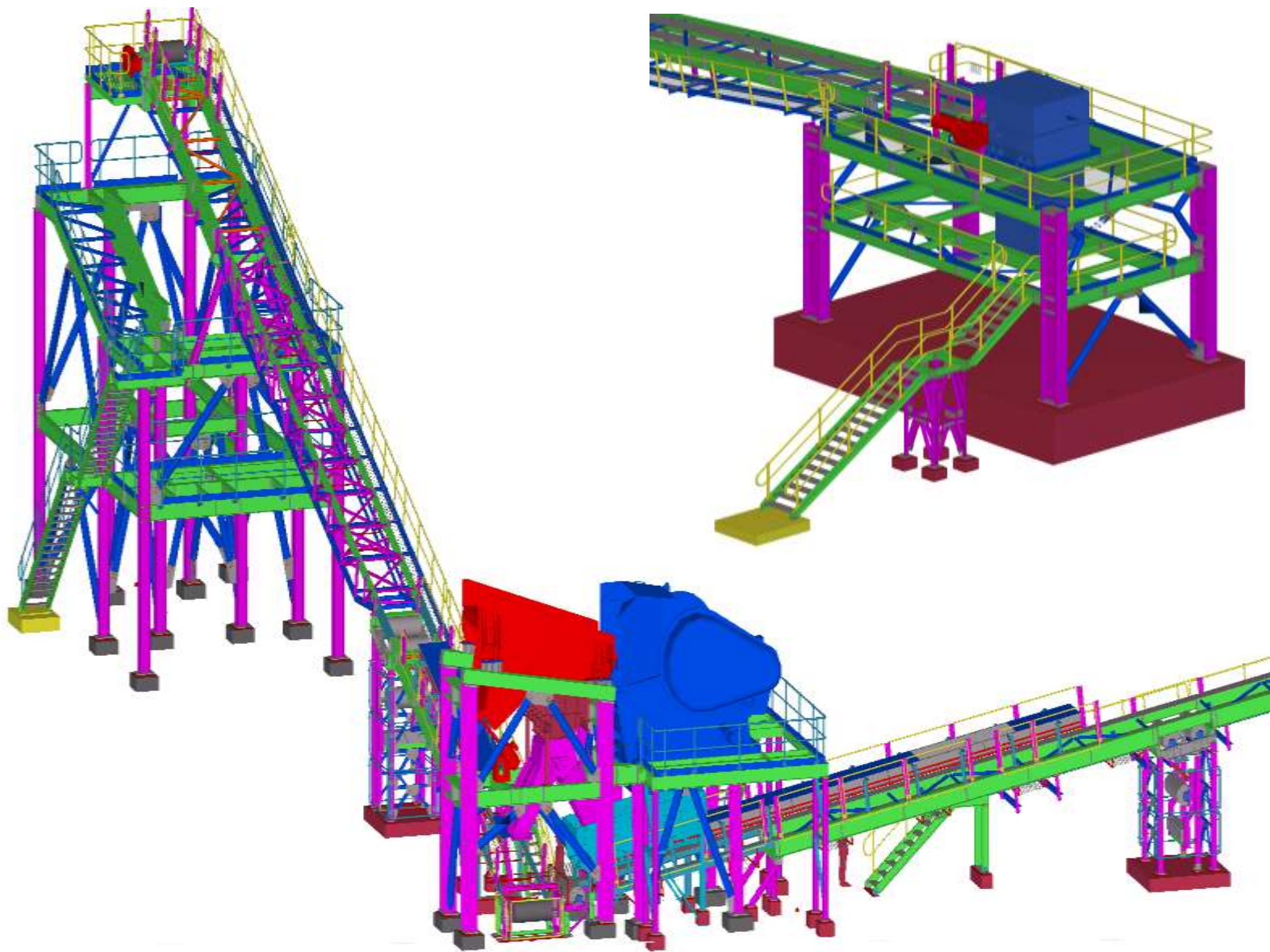


BASE PLATE PLAN
135



BOLT LIST								
Sl No.	Grade	Site / Workshop	Size	Bolt Qty.	Nut Qty.	Washer Qty.	Bolt Wt. only(Kg)	Remarks
1	8.8S	Site	BOLT 12X25	10	10	10	0.4	BOLT QTY AS SHOWN EXACT
2	8.8S	Site	BOLT 12X35	82	82	82	4.9	
3	8.8S	Site	BOLT 16X35	54	54	54	5.04	
4	8.8S	Site	BOLT 16X40	107	107	107	9.58	
5	8.8S	Site	BOLT 16X45	462	462	462	43.36	
6	8.8S	Site	BOLT 16X50	54	54	54	4.87	
7	8.8S	Site	BOLT 16X55	8	8	8	1.06	
8	8.8S	Site	BOLT 16X65	2	2	2	0.19	
9	8.8S	Site	BOLT 20X45	24	24	24	3.12	
10	8.8S	Site	BOLT 20X50	210	210	210	20.67	
11	8.8S	Site	BOLT 20X55	32	32	32	4.56	
12	8.8S	Site	BOLT 20X60	8	8	8	0.59	
13	8.8S	Site	BOLT 20X70	4	4	4	1.29	

ASSEMBLY & PART LIST							
SL No.	DRAWING NO & PART MARK	PROFILE	QTY	MATERIAL	LENGTH(mm)	WEIGHT/QTY	TOTAL WEIGHT
1	CPA-17-385-02-01-FR1		1			465.8	465.8
2	EA43	EA75*75*6	1	AS3678/250(GALV)	634	4.3	
3	EA44	EA75*75*6	1	AS3678/250(GALV)	819	5.6	
4	EA48	EA75*75*6	1	AS3678/250(GALV)	634	4.3	
5	EA49	EA75*75*6	1	AS3678/250(GALV)	819	5.6	
6	EA102	EA65*65*6	2	AS3678/250(GALV)	400	2.3	
7	PFC2	PFC100*50	1	AS3678/250(GALV)	160	1.3	
8	PFC34	PFC180*75	1	AS3678/250(GALV)	501	10.5	
9	PFC46	PFC180*75	1	AS3678/250(GALV)	645	13.5	
10	PFC47	PFC180*75	1	AS3678/250(GALV)	645	13.5	
11	PFC48	PFC180*75	1	AS3678/250(GALV)	1931	40.3	
12	PFC49	PFC180*75	1	AS3678/250(GALV)	1931	40.3	



SUPPORTS, WALKWAYS, STRUCTURES, WAREHOUSE, CONVEYORS, CHUTES, TRANSFER TOWERS



R3 Plant design founded By Anthony Foster, in 2010 collaborating with an Indian design company. The goal was to build a cost effective design and detailing company specializing in belt conveyors and structures. It is a unique combination of Australian design with Indian modelling and detailing team to meet the challenges of the Global Market. Nowadays the company is involved in various projects and expanding business activities to Europe Australia and South Africa.

Founder member, Anthony Foster has over 20 years' experience in designing belt conveyors & structures. He started his career at Worley Parsons in Australia as a Design Engineer and has worked at various senior levels in India and South Africa.

India

R3 PLANT DESIGN
(Main Design Office)
#23 /5, Novel Office
Hosur road, Hosapalya
Bengaluru, India – 560068
PH: +91 96066 72871
Email: info@r3plantdesign.com,
www.r3plantdesign.com

Australia

R3 PLANT DESIGN
Edithvale
Vic 3196, Australia.
PH: +61 405 175 734
Email: chrisc@r3plantdesign.com
www.r3plantdesign.com

Germany

R3 PLANT DESIGN
WEG, 19051
Regensburg
Deutschland - 93053
PH: +49 17089 24045
Email: info@r3plantdesign.com,
www.r3plantdesign.com

USA

R3 PLANT DESIGN
411, Woodchuck Place, BEAR
Delaware - 19701.
PH: +1 (302) 229 - 7219
Email: info@r3plantdesign.com,
www.r3plantdesign.com